

Casco C-Matt™ Cot Mattress

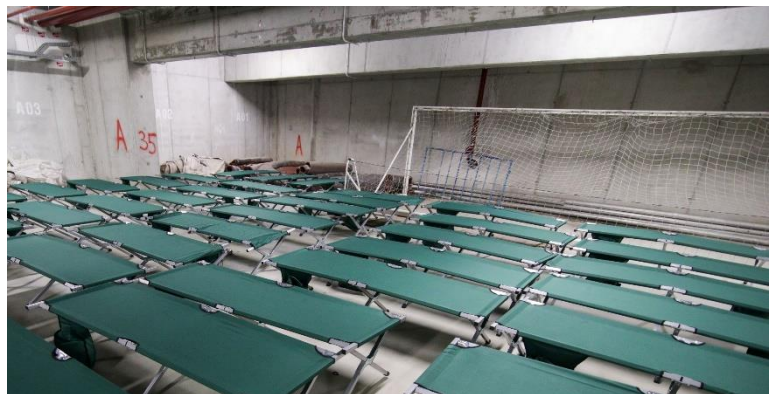
C-Matt™ Cot mattresses are quality support surfaces that offer exceptional safety and durability benefits. Our mattresses are custom designed to meet your every need — **safety, comfort, and easy cleaning and maintenance.** All C-Matt replacement mattresses are made in the USA by a Certified Woman Owned Small Business.



What the C-Matt™ Cot Mattress Can Do for You

CASCO's C-Matt™ Cot mattress offers a completely sealed and secure bedding solution. The mattress is durable and completely fluid proof.

From our patented radio frequency sealing to the optional opaque covers, every aspect of this mattress was designed with safety in mind. You can choose from several optional features to customize a mattress that perfectly fits the needs of any facility.



Features & Benefits

Cover features include:

- **Patented seal.** Radio frequency (RF) welding technology prevents fluids from penetrating the mattress.
- **Antimicrobial and hypoallergenic.** Our fabric is treated to inhibit bacterial growth and has proven to be hypoallergenic.
- **Medical-grade tri-laminate vinyl.** Our cover is constructed of a polyester scrim surrounded by two layers of vinyl. This durable construction enhances the longevity of the mattress and helps it maintain its proper form. It is also antimicrobial, antifungal and fluid-proof.
- **Vents.** Bed bug proof vents prevent moisture buildup.
- **Cover.** Our Ocean Blue, 8.5 oz. Tri-Laminate reinforced vinyl.
- **Flexibility of use.** This mattress can be used on a standard bed frame or in an emergency response situation, can be placed directly on a ground surface without fear of moisture wicking into and through the mattress.

Foam features include:

- **Choice of core density.** We offer an economic densified polyester core or a 1.8 lb. density foam core that enhances comfort and durability. Densified Polyester Core meets Cal 129/Fed 1633 fire standards without optional fire barrier. Foam Core meets Cal 117-2013 fire standard.
- **Optional fire barrier available for foam core.** Barrier is in compliance with all state and federal fire safety standards. Meets Cal 129/Fed 1633.
- **Fully reversible foam and densified polyester mattress.** Mattress has no specific head/foot or top/bottom designations, can be flipped and turned in any direction to enhance comfort and extend mattress life.

Identification Codes and Dimensions	
Casco Part Number	H10299
GTIN	00815073028321
UPC	1507302832
Length	72"
Width	30"
Thickness	4"
Weight Capacity (lbs.)	300
Packaging Details	
Packaging Dimensions	12"x32"x36"
Unit of Measure	1 Each
Weight (lbs.)	20 lbs.
Other Specifications	
Latex Free	Yes

